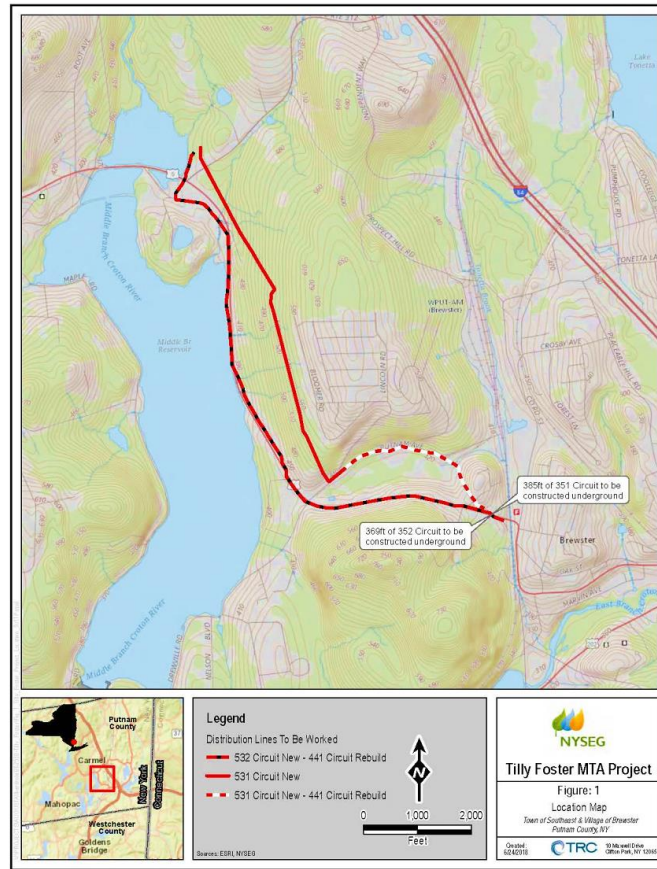


New York State Electric and Gas (NYSEG) is constructing a project for the MTA Metro-North Railroad to support operations at their Brewster Station.

The MTA Tilly Foster project includes the installation of two dedicated 13.2kV distribution feeders to support Metro North Railroad service needs for a new DC traction power substation adjacent to the Brewster station along Metro-North Railroad's Harlem Line. The addition of the rectifier substation at this location will alleviate voltage drop concerns on the third rail system as Metro-North plans on meeting increasing customer demand by adding additional trains on the upper Harlem Line. Metro North has completed substantial construction of the DC traction power substation at the site. In order to proceed with the project, feeds are required from NYSEG to commission the new rectifier substation.

The installation of two dedicated 13.2kV distribution feeders will involve:



- 2.0 miles of rebuilding the existing double circuit line along Route 6 (*red and black dashed line*)
- 0.7 miles of rebuilding a single circuit distribution line into a double circuit distribution line along Putnam Avenue (*red and white dashed line*)
- 1.4 miles of new distribution line in the existing NYSEG transmission line right-of-way (*solid red line*)
- Two new underground distribution lines (0.07 miles each) under Route 6 (*approximately 200' west of the Route 6 bridge over the railroad tracks*).

Line crews are expected to begin work on January 14, 2019 which may cause increased noise and traffic along the work corridors. The company expects the construction to be completed by April 15, 2019.